

artu

Fabric sample book



# artu

|    |               |    |
|----|---------------|----|
| C1 | Wind          | 3  |
|    | Mossa         | 4  |
|    | Pecos         | 5  |
|    | Pretty        | 6  |
|    | Melody        | 7  |
| C2 | Puente        | 8  |
|    | Magni         | 9  |
|    | Tasos         | 10 |
|    | Now or never  | 11 |
|    | Nube          | 12 |
|    | Baloo         | 13 |
| C3 | Athlon        | 14 |
|    | Grain         | 15 |
|    | Select        | 16 |
|    | Breeze Fusion | 17 |

## Table of content

# artu

## WIND

Uphlostery grade – C1

**Grammage m<sup>2</sup>**

230g/m<sup>2</sup> +/-5%

**Composition**

100% Polyester

**Usable width**

min 140 cm

**Martindale Test**

30000-40000

**Thread displacement**

2,8-3,2 mm WARP / 2,9-3,3 mm WEFT

**Tendency to pilling and peeling**

4-5

**Fastness to rubbing dry**

4-5

**Fastness to rubbing wet**

4



02



05



11



21



22



23



28



31



33



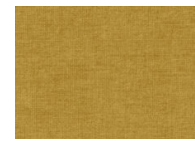
34



35



38



48



52



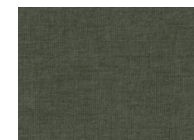
56



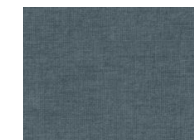
63



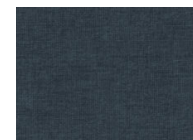
73



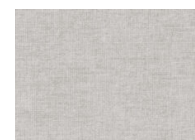
75



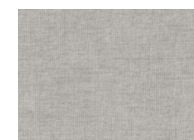
76



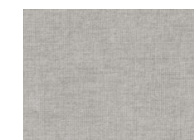
77



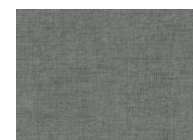
80



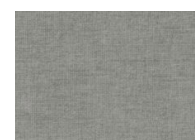
82



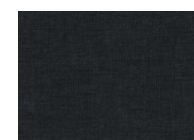
84



89



90



99

# artu

## Mossa

Uphlostery grade – C1

**Grammage m<sup>2</sup>**

325g/m<sup>2</sup> +/-10%

**Composition**

100% Polyester

**Usable width**

min. 140 cm

**Martindale Test**

>100000

**Thread displacement**

3,4-3,8 mm WARP / 2,7-3,3 mm WEFT

**Tendency to pilling and peeling**

4

**Fastness to rubbing dry**

5

**Fastness to rubbing wet**

4-5



03



07



09



10



15



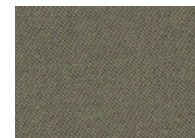
18



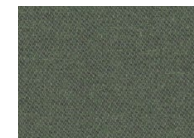
26



29



33



36



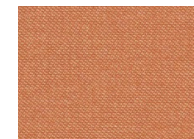
41



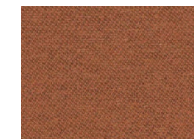
42



48



54



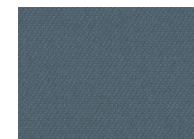
56



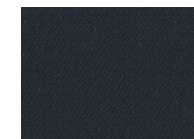
70



72



73



79



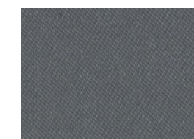
80



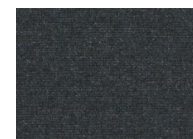
88



89



94



97

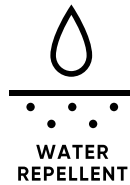


99

# artu

## Pecos

Uphlostery grade – C1



|  |                           |
|--|---------------------------|
| <b>Grammage m<sup>2</sup></b>          | 300 g/m <sup>2</sup>      |
| <b>Composition</b>                     | 88% PES, 12% NY           |
| <b>Usable width</b>                    | 140 cm +/- 2 cm           |
| <b>Martindale Test</b>                 | 75000                     |
| <b>Thread displacement</b>             | 2.8 mm WARP / 2.0 mm WEFT |
| <b>Tendency to pilling and peeling</b> | 3-4                       |
| <b>Fastness to rubbing dry</b>         | 4-5                       |
| <b>Fastness to rubbing wet</b>         | 5                         |



01



02



03



04



05



06



07



08



09



10



11



12



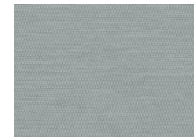
13



14



15



16



17

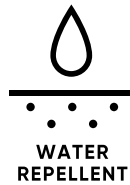


18

# artu

## Pretty

Uphlostery grade – C1



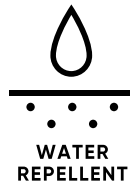
|                                 |                                   |
|---------------------------------|-----------------------------------|
| Grammage m <sup>2</sup>         | 450g/m <sup>2</sup> +/-5%         |
| Composition                     | 100% Polyester                    |
| Usable width                    | min. 140 cm                       |
| Martindale Test                 | 60000-100000                      |
| Thread displacement             | 1,7-1,9 mm WARP / 1,9-2,1 mm WEFT |
| Tendency to pilling and peeling | 4-5                               |
| Fastness to rubbing dry         | 4-5                               |
| Fastness to rubbing wet         | 4-5                               |



# artu

## Melody

Uphlostery grade – C1



|                                 |                           |
|---------------------------------|---------------------------|
| Grammage m <sup>2</sup>         | 400 g/m <sup>2</sup>      |
| Composition                     | 100% PES                  |
| Usable width                    | 140 cm +/- 2 cm           |
| Martindale Test                 | >100000                   |
| Thread displacement             | 2,7 mm WARP / 2,1 mm WEFT |
| Tendency to pilling and peeling | 4                         |
| Fastness to rubbing dry         | 5                         |
| Fastness to rubbing wet         | 5                         |



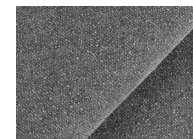
1



2



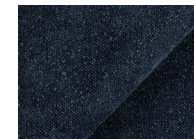
3



4



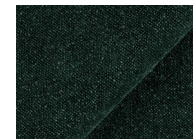
5



6



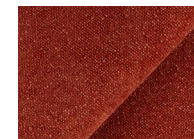
7



8



9



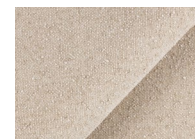
10



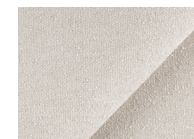
11



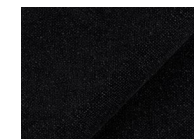
12



13



14



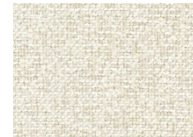
15

# artu

## Puente

Uphlostery grade – C2

|  |                                   |
|--|-----------------------------------|
| <b>Grammage m<sup>2</sup></b>          | 500g/m <sup>2</sup> +/-5%2        |
| <b>Composition</b>                     | 95%PES 5%CO                       |
| <b>Usable width</b>                    | min. 140 cm                       |
| <b>Martindale Test</b>                 | >100000                           |
| <b>Thread displacement</b>             | 2,6-3,0 mm WARP / 3,7-4,2 mm WEFT |
| <b>Tendency to pilling and peeling</b> | 4                                 |
| <b>Fastness to rubbing dry</b>         | 5                                 |
| <b>Fastness to rubbing wet</b>         | 4-5                               |



03



06



09



11



16



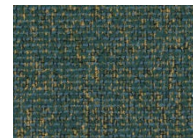
33



34



35



37



39



41



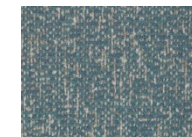
52



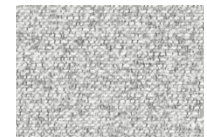
53



69



73



80



92



94



# artu

## Magni

Uphlostery grade – C2

|  |                            |
|--|----------------------------|
| <b>Grammage m<sup>2</sup></b>          | 500g/m <sup>2</sup> +/-5%2 |
| <b>Composition</b>                     | 100% PES                   |
| <b>Usable width</b>                    | 142 ± 3 cm                 |
| <b>Martindale Test</b>                 | 90000                      |
| <b>Thread displacement</b>             | 4,0 mm WARP / 3,0 mm WEFT  |
| <b>Tendency to pilling and peeling</b> | 4                          |
| <b>Fastness to rubbing dry</b>         | 5                          |
| <b>Fastness to rubbing wet</b>         | 5                          |



03



06



09



11



16



33



34



35



37



39



41



52



53



69



73



80



92



94

# artu

## Tasos

Uphlostery grade – C2

|  |                           |
|--|---------------------------|
| <b>Grammage m<sup>2</sup></b>          | 450 g/m <sup>2</sup>      |
| <b>Composition</b>                     | 100% PES                  |
| <b>Usable width</b>                    | 142 cm +/- 2 cm           |
| <b>Martindale Test</b>                 | 85000                     |
| <b>Thread displacement</b>             | 1,0 mm WARP / 1,0 mm WEFT |
| <b>Tendency to pilling and peeling</b> | 4-5                       |
| <b>Fastness to rubbing dry</b>         | 4-5                       |
| <b>Fastness to rubbing wet</b>         | 4-5                       |



# artu

## Now or never

Uphlostery grade – C2



RECYCLED  
POLYESTER

**Grammage m<sup>2</sup>**

420g/m<sup>2</sup> +/-5%

**Composition**

100% rPES

**Usable width**

min. 140 cm

**Martindale Test**

90 000->100 000

**Thread displacement**

0,5-0,7 mm WARP / 1,1-1,3 mm WEFT

**Tendency to pilling and peeling**

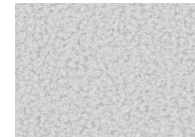
3-4

**Fastness to rubbing dry**

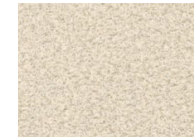
light-5 / medium-4-5 / dark-4-5

**Fastness to rubbing wet**

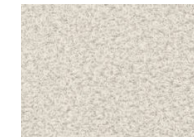
light-4-5 / medium-5 / dark-4-5



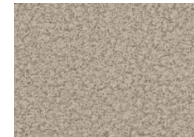
01



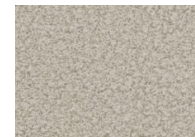
02



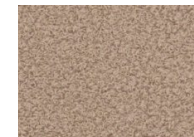
03



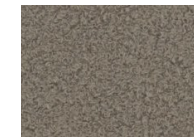
05



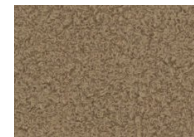
06



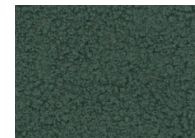
14



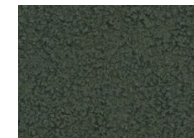
16



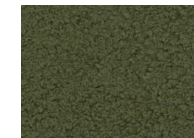
18



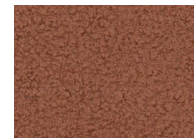
34



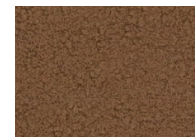
37



38



54



56



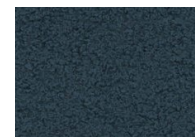
61



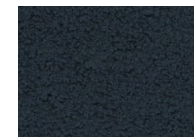
64



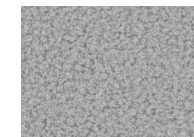
73



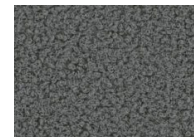
77



79



83



92



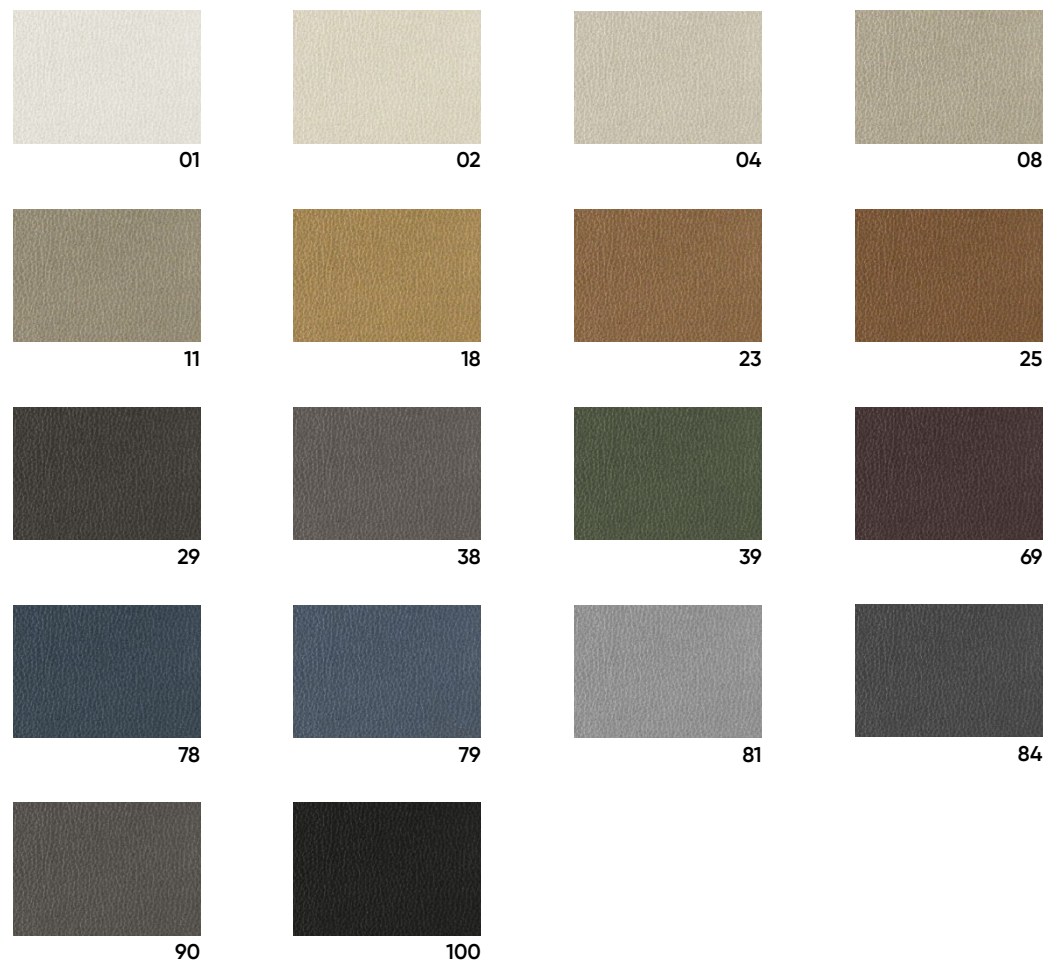
100

# artu

## Nube

Uphlostery grade – C2

|  |   |
|--|---|
| <b>Grammage m<sup>2</sup></b>          | 360 g/m <sup>2</sup> +/-5% <sup>2</sup> |
| <b>Composition</b>                     | 100% Polyester                          |
| <b>Usable width</b>                    | min. 140 cm                             |
| <b>Martindale Test</b>                 | 50000-60000                             |
| <b>Thread displacement</b>             | 1,6-2,0 mm WARP / 1,6-2,0 mm WEFT       |
| <b>Tendency to pilling and peeling</b> | 4-5                                     |
| <b>Fastness to rubbing dry</b>         | 4-5                                     |
| <b>Fastness to rubbing wet</b>         | 4-5                                     |



# artu

## Baloo

Uphlostery grade – C2

|  |                           |
|--|---------------------------|
| <b>Grammage m<sup>2</sup></b>          | 570g/m <sup>2</sup> +/-5% |
| <b>Composition</b>                     | 93% PES, 6% ACR, 1% COT   |
| <b>Usable width</b>                    | 142 ± 3 cm                |
| <b>Martindale Test</b>                 | >100000                   |
| <b>Thread displacement</b>             | 2 mm WARP / 3 mm          |
| <b>Tendency to pilling and peeling</b> | 4-5                       |
| <b>Fastness to rubbing dry</b>         | 5                         |
| <b>Fastness to rubbing wet</b>         | 4-5                       |



2071



2072



2073



2074



2075



2076



2077



2078



2079



2080



2081



2082



2083



2084



2085



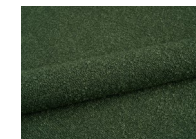
2086



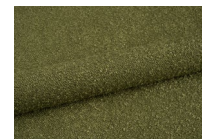
2087



2088

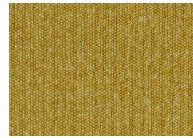


2089



2090

# artu



6500-68252



6500-60140



6500-60141



6500-60167



6500-60900



6500-68251



6500-61140



6500-61194



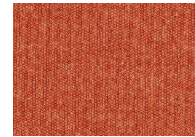
6500-61246



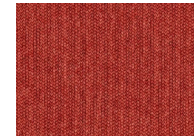
6500-62119



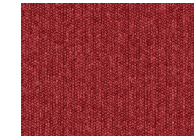
6500-68169



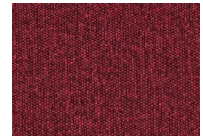
6500-63115



6500-64221



6500-64246



6500-64247

## Athlon

Uphlostery grade – C3

Grammage m<sup>2</sup>

750 g/lm

Composition

100% Polyester

Usable width

140 cm

Martindale Test

100000

Tendency to pilling and peeling

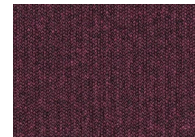
5

Fastness to rubbing dry

4-5

Fastness to rubbing wet

4-5



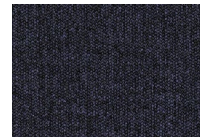
6500-65118



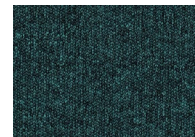
6500-65134



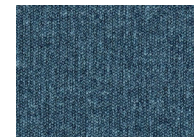
6500-65135



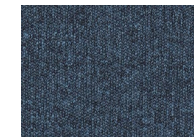
6500-65136



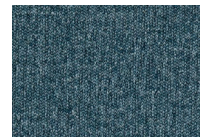
6500-66140



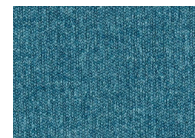
6500-66225



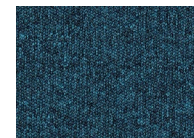
6500-66226



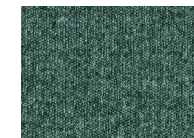
6500-66227



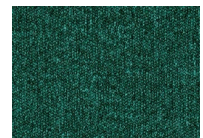
6500-66228



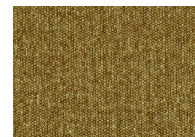
6500-66229



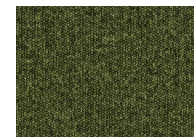
6500-67120



6500-67121



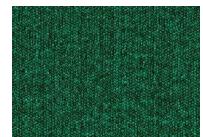
6500-68253



6500-68254



6500-68255



6500-68256

# artu

## Grain

Uphlostery grade – C3

Grammage m<sup>2</sup>

750 g/lm

Composition

100% Polyester

Usable width

140 cm

Martindale Test

100000

Tendency to pilling and peeling

5

Fastness to rubbing dry

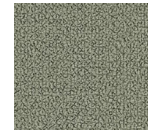
4-5

Fastness to rubbing wet

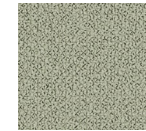
4-5



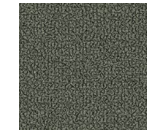
2288-60300



2288-60301



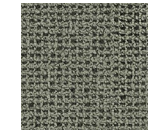
2288-60302



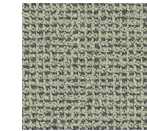
2288-60303



2288-60320



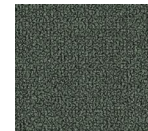
2288-60321



2288-60322



2288-60323



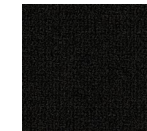
2288-60324



2288-60325



2288-60328



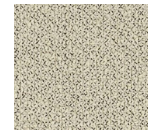
2288-60999



2288-61037



2288-61146



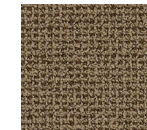
2288-61229



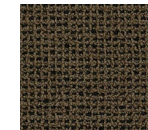
2288-61230



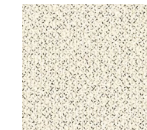
2288-61247



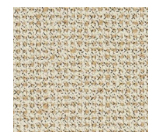
2288-61248



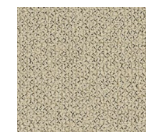
2288-61249



2288-61250



2288-61251



2288-61252



2288-61253



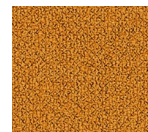
2288-61254



2288-61255



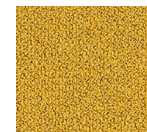
2288-61256



2288-61016



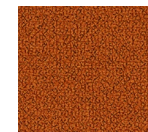
2288-61121



2288-61122



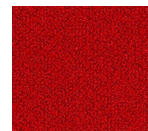
2288-61123



2288-63117



2288-63118



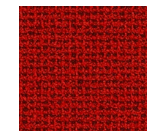
2288-64041



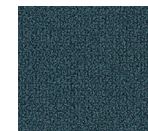
2288-64249



2288-64250



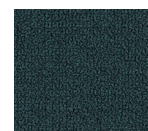
2288-64251



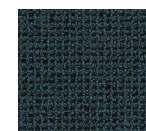
2288-66216



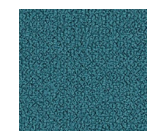
2288-66231



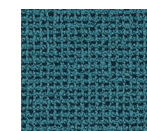
2288-66232



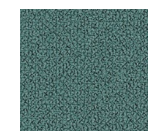
2288-66233



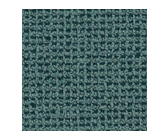
2288-66234



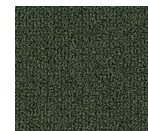
2288-66235



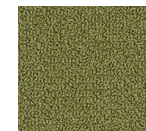
2288-66236



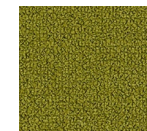
2288-66237



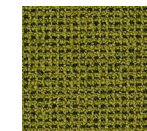
2288-68155



2288-68243



2288-68257



2288-68258

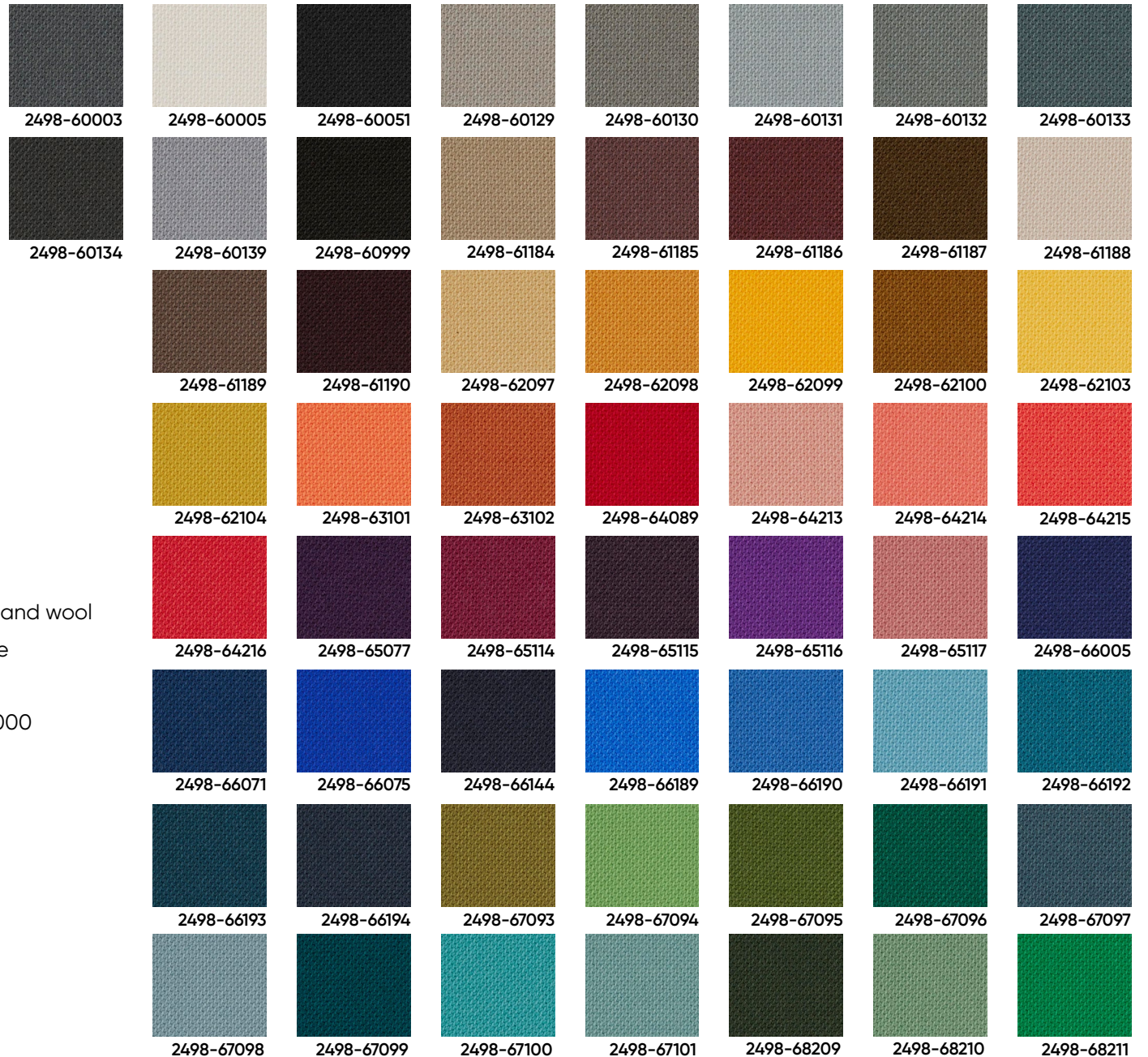


2288-68259



2288-68260

# artu



## Select

Uphlostry grade – C3

Grammage m<sup>2</sup>

510 g/lm

Composition

85% New Zealand wool

15% Polyamide

Usable width

140 cm

Martindale Test

100000-200000

Tendency to pilling and peeling

4

Fastness to rubbing dry

4-5

Fastness to rubbing wet

4-5



# artu

## Breeze Fusion

Uphlostery grade – C3

Grammage m<sup>2</sup>

590 g/lm

Composition

88% New Zealand wool

12% Polyamide

Usable width

140 cm

Martindale Test

100000

Tendency to pilling and peeling

4-5

Fastness to rubbing dry

4-5

Fastness to rubbing wet

4-5

